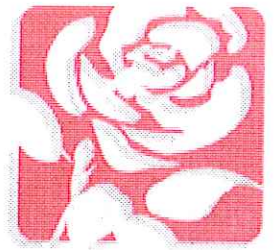


St Augustines Ward Penarth Labour



HELPING YOU TO MAKE YOUR VOICE HEARD



Keeping in Touch

Gwyn Roberts and Lis Burnett will be standing for Penarth's St Augustines Ward in the Vale Council Elections

Lis Burnett

029 2025 6295

Lisburnett@hotmail.co.uk

Gwyn Roberts

029 2070 5855

gwynpenarth@hotmail.co.uk

Twitter [@Penarthlabour](https://twitter.com/Penarthlabour)

www.penarthlabour.org.uk

Our Pledges to You

If elected, the Labour Party in the Vale will:

1. Stop the savage cuts to services for the elderly; and give a **Council Tax discount to over 70's**
2. **Reintroduce traffic wardens** to deal with parking problems in Penarth
3. **Introduce dedicated Grime Fighters** for Penarth
4. Invest in our road surfaces and **deal with the many pot holes** in our roads.
5. Invest more money into **youth services**, in consultation with young people
6. Introduce a youth mayor and youth cabinet – to **give young people a say** on services in Penarth.
7. Ensure Council Tax payers get value for money by **bringing Council spending under control**, especially in Social Services,
8. Ensure the **Penarth Pier project is delivered**
9. Increase the number of dog wardens to **deal with the growing problem of dog mess**
10. Provide a **new community centre at St Pauls.**
11. **Fight against car parking charges** for Penarth town centre
12. Support and make sure the Penarth **learning community at St Cyres is built**

Tell us about yourself.....

- I would like to vote by post
- I would like to speak to a candidate in person
- I would like information about the Labour Party
- I would like to join the Labour Party

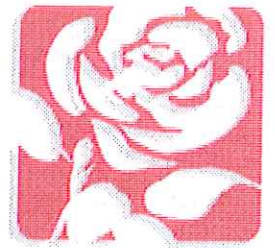
Name:

Tel:

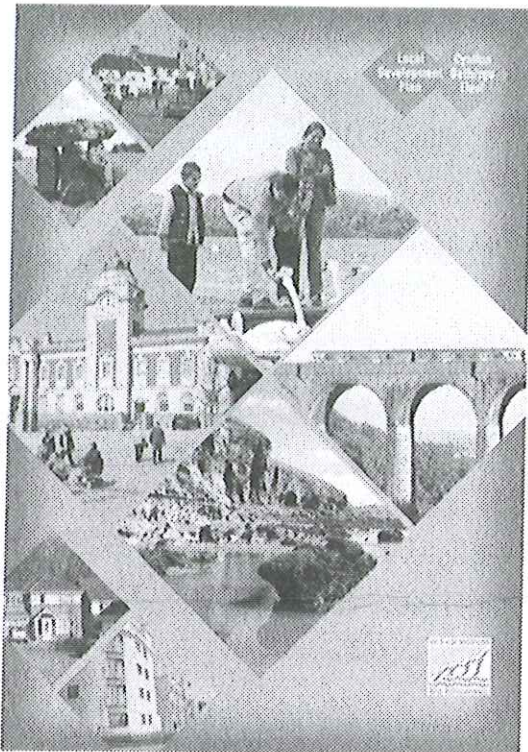
Address:

Email address:

Penarth Labour Local



WORKING WITH YOU FOR A BETTER PENARTH



Development Plan Traffic Chaos for Penarth

Penarth Tory Councillors have pushed through a Development Plan for the Vale that could see over 1000 houses built in the area with no improvement in roads or public transport.

Local Town Councillor Gwyn Roberts said "While there are plans for improvements in roads and train services elsewhere in the Vale, Penarth has to bear the huge increase in traffic alone. Yet again it feels like Penarth has been forgotten by the Vale Council"

"We know there is a desperate need for housing locally, but to add over 1000 properties without tackling traffic and transport problems is lunacy. Penarth will face gridlock" added Lis Burnett.

**Make your comments
by 2nd April.**

You can view the complete development plan at Penarth Library or online at www.valeofglamorgan.gov.uk where you can also make a comment before 2nd April.

If you would like further information or help in making your comment please don't hesitate to contact us.

Location of Houses

Fort Road, Lavernock	450 homes
Sully Road (St Joseph's School)	70 homes
Headlands School, Penarth	80 homes
Swanbridge Road, Sully	650 homes
Leckwith Road, Llandough	20 homes
Llandough Hill / Penarth Road	150 homes
Caerleon Road, Dinas Powys	60 homes
St Cyres School, Dinas Powys	340 homes
Total	1420

A Strong Voice for Penarth in the Vale – Time for Change